

ACCESSIBILITY

Directly connected to Tung Chung MTR Station as well as Public Transport Interchange to Airport Island, Discovery Bay, HK-Zhuhai-Macao Bridge and other major destinations.

TYPICAL LETTABLE FLOOR AREA

Approx. 14,900 - 17,930 sq ft (1,390 - 1,670 sqm)

NO. OF OFFICE FLOORS

9

TYPICAL FINISHED FLOOR TO FALSE CEILING HEIGHT

Approx. 2.7 m (8 ft 10 in)

FLOOR LOADING

Approx. 5 kPa (100 lbs / sq ft)

TRUNKING

Three-compartment floor trunking

24-HOUR ACCESS

Card Key system incorporated with the passenger lifts for controlling access to each office floor after office hours

AIR-CONDITIONING

Fan Coil system (FCU) with perimeter heating

ONE CITYGATE

20 TAT TUNG ROAD, TUNG CHUNG, LANTAU

**LIFTS**

4 passenger lifts and 1 service lift

TENANTS' STANDBY ELECTRICAL PROVISION

Provision of emergency electrical power to tenants' essential applications and equipment

COMPUTER ROOM COOLING

Dedicated 24-hour chilled water supply with backup generator

TELECOMMUNICATIONS PROVISIONS

- Free choice of telecom services
- Comprehensive in-building mobile coverage
- Full cat 5 and fiber optics wiring
- Dual riser

ACCESSIBLE CAR PARKING SPACES

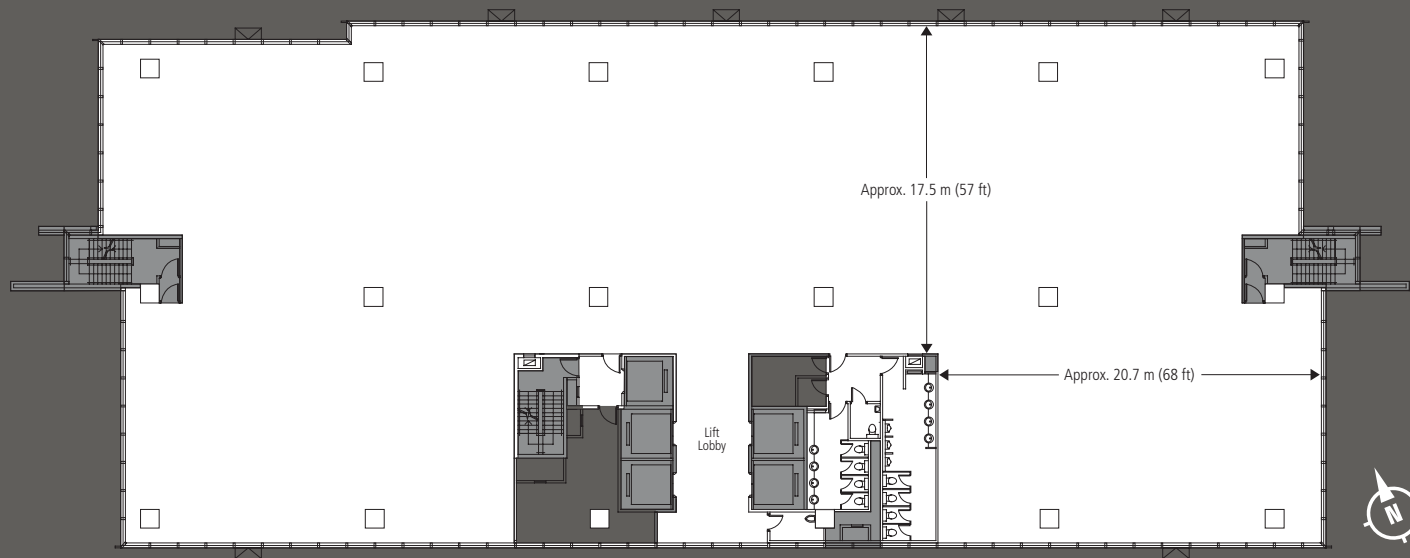
Over 1,100

AMENITIES

Directly connected with Citygate Outlets with almost 200 shops and over 40 restaurants, a cinema and 2 hotels.



TYPICAL FLOOR PLAN



Lettable Floor Area : Approx. 17,930 sq ft (1,670 sqm)

LOCATION MAP

